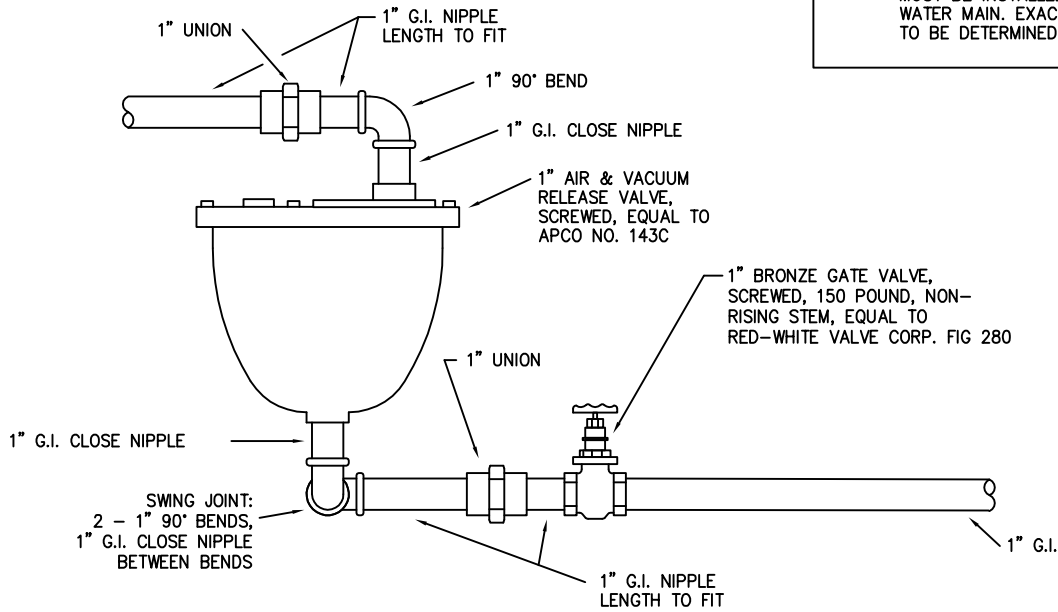
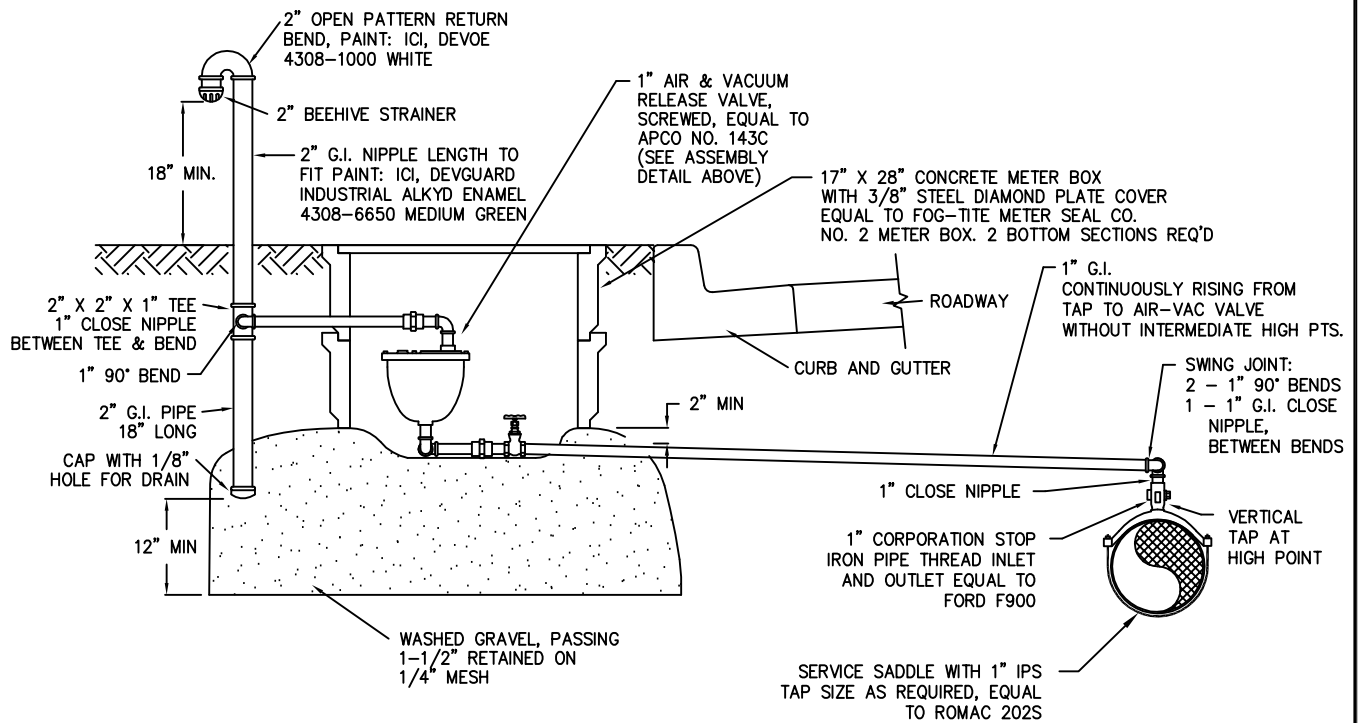


NOTE: TAP FOR AIR AND VACUUM VALVE ASSEMBLY MUST BE INSTALLED AT HIGHEST POINT OF WATER MAIN. EXACT LOCATION OF ASSEMBLY TO BE DETERMINED BY DISTRICT.



VALVE ASSEMBLY DETAIL



1" AIR AND VACUUM VALVE ASSEMBLY

WATER STANDARD DETAIL

NORTHEAST SAMMAMISH SEWER AND WATER DISTRICT

FILE	SCALE	DATE
SAMDTW3	NTS	9/13/93