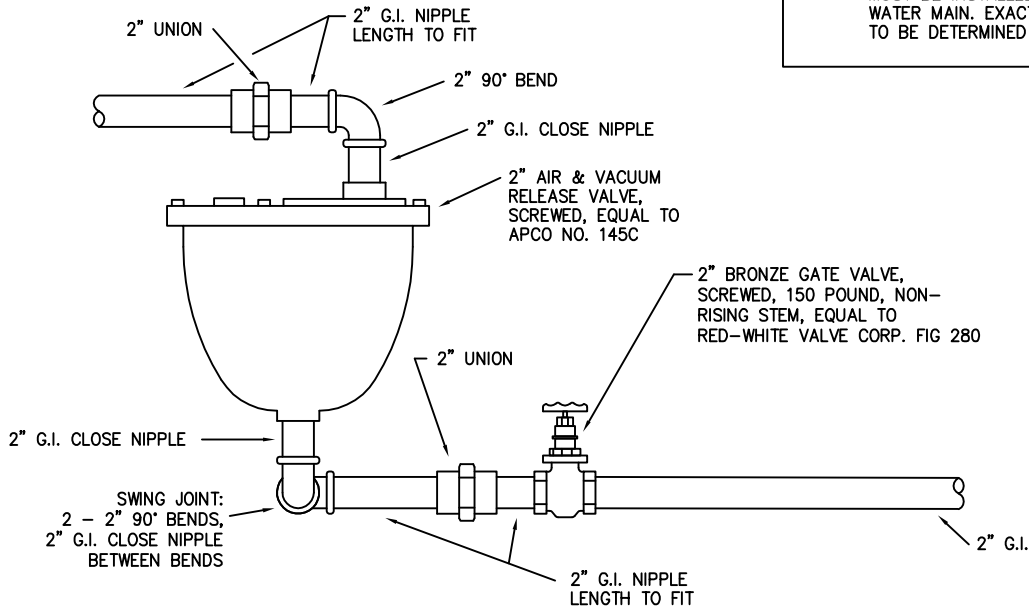
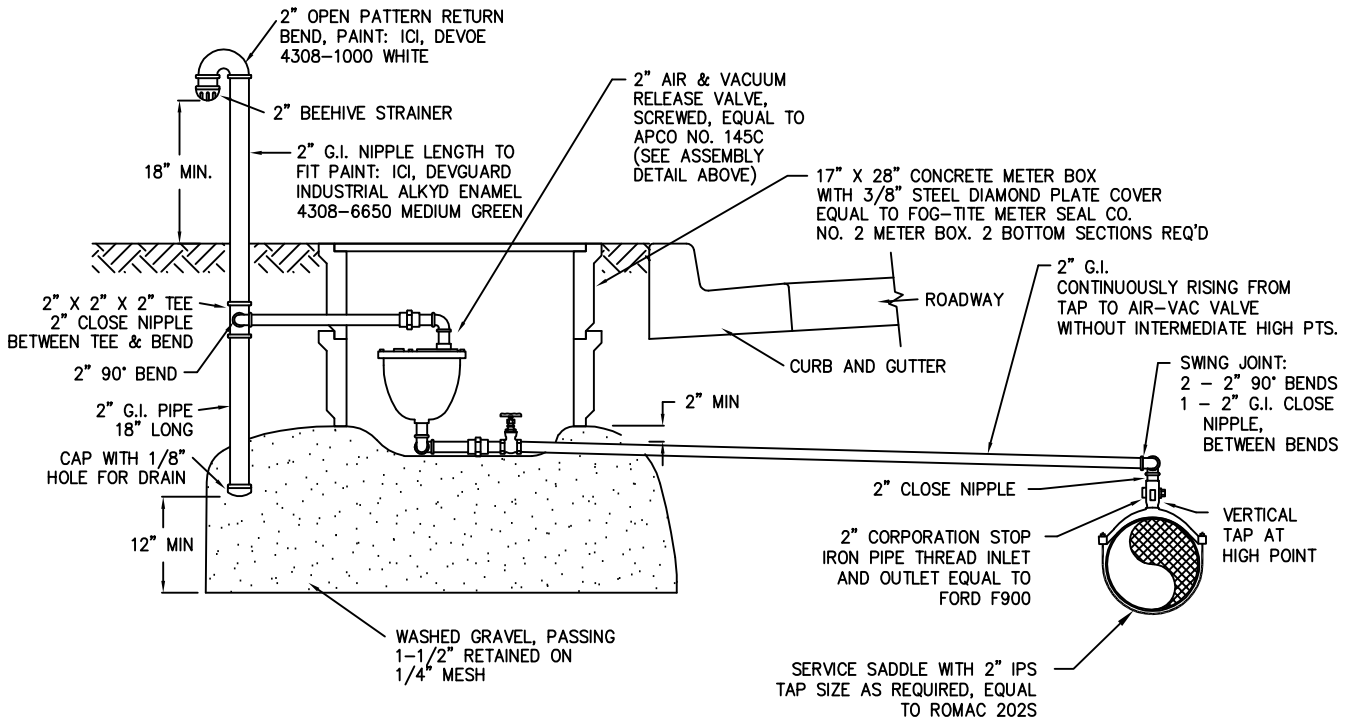


NOTE: TAP FOR AIR AND VACUUM VALVE ASSEMBLY MUST BE INSTALLED AT HIGHEST POINT OF WATER MAIN. EXACT LOCATION OF ASSEMBLY TO BE DETERMINED BY DISTRICT.



VALVE ASSEMBLY DETAIL



2" AIR AND VACUUM VALVE ASSEMBLY

WATER STANDARD DETAIL

**NORTHEAST SAMMAMISH
SEWER AND WATER DISTRICT**

FILE	SCALE	DATE
SAMDTW4	NTS	9/13/93